

ABBREVIATIONS:

Table of abbreviations from A to W, organized in columns. Includes terms like COMPRESSED AIR OUTLET, BALANCE, CABINET, CAPACITY, CENTER TO CENTER, etc.

GENERAL NOTES:

- 1. ALL DIMENSIONS MUST BE FIELD VERIFIED AND THE ARCHITECT MUST BE NOTIFIED OF ANY DISCREPANCIES BEFORE PROCEEDING WITH THE WORK. DO NOT SCALE DRAWINGS.
2. ALL INTERIOR DIMENSIONS ARE TO FACE OF GYPSUM BOARD UNLESS NOTED OTHERWISE.
3. COORDINATE LOCATIONS AND/OR ELEVATIONS OF FLOOR DRAINS, REGISTERS, GRILLES, LOUVERS, CONVECTORS, CABINET UNIT HEATERS, PANELS, ETC. WITH MECHANICAL AND ELECTRICAL CONTRACTORS.
4. CONTRACTORS INSTALLING ANCHORS INTO CONCRETE MASONRY UNITS SHALL GROUT SOLID THE CMU AT THE ANCHOR LOCATION.
5. ALL DIMENSIONS AND TIE-INS GOVERNED BY EXISTING CONDITIONS ARE APPROXIMATE AND ARE NOT GUARANTEED TO BE CORRECT. ALL SUCH DIMENSIONS AND CONDITIONS SHALL BE FIELD VERIFIED BY THE CONTRACTORS PRIOR TO THE PREPARATION OF SHOP DRAWINGS AND BEFORE PROCEEDING WITH ANY WORK. THE FIRST SUBMITTAL OF SHOP DRAWINGS MUST CONTAIN CORRECT CONDITIONS AND DIMENSIONS OBTAINED FROM THE FIELD. IF CONDITIONS AND DIMENSIONS VARY GREATLY FROM THOSE SHOWN, THE CONTRACTOR SHALL NOTIFY THE ARCHITECT BEFORE PREPARATION OF SHOP DRAWINGS, AND BEFORE PROCEEDING WITH WORK.
6. DEMOLITION WORK SHOWN SHOULD BE COORDINATED WITH CONSTRUCTION DOCUMENTS FOR FINAL DIMENSIONS AND DETAILS NECESSARY TO DEFINE EXACT LIMITS AND/OR OF DEMOLITION.
7. COORDINATE FLOOR AND WALL PENETRATIONS WITH ALL TRADES INVOLVED. PROVIDE STEEL FRAMES, SLEEVES, LINTELS, AND SIMILAR ENCLOSURES REQUIRED AROUND PENETRATIONS IN MASONRY OR CONCRETE WALLS, FLOORS, FIRE SEAL PENETRATIONS THROUGH FIRE RATED CONSTRUCTION WITH UL MATERIALS.
8. CONTRACTORS SHALL COORDINATE AND OBTAIN ALL NECESSARY PERMITS, APPROVALS AND GUIDELINES FROM GOVERNING REGULATORY AGENCIES. CONSTRUCTION WORK WILL NOT PROCEED UNTIL ALL REQUIRED REGULATORY APPROVALS HAVE BEEN ISSUED. BUILDING PERMIT WILL BE OBTAINED BY THE OWNER.
9. CONSTRUCT PARTITIONS IN ACCORDANCE WITH PLANS. PARTITION TYPES, SPECIFICATIONS, AND OTHER REQUIREMENTS OF THE CONTRACT DOCUMENTS. ALSO COORDINATE WITH OTHER CONTRACTORS' REQUIREMENTS.
10. IF EQUIPMENT IS RECESSED IN A FIRE-RESISTANT RATED WALL, MAINTAIN THE RATING OF THE WALL AROUND THE RECESSED EQUIPMENT IN ALL CASES.
11. CEILING HEIGHT(S) NOTED ON DRAWINGS FOR ROOMS OR AREAS IS THE HEIGHT FROM FINISHED FLOOR SURFACE TO FINISHED CEILING OR WHERE NO FINISHED CEILING IS CALLED FOR, THE CEILING HEIGHT(S) NOTED IS THE MINIMUM REQUIRED HEADROOM CLEARANCE FROM FINISHED FLOOR TO UNDERSIDE (LOW POINT) OF PIPES, DUCTS, CONDUITS, LIGHT FIXTURES, AND SIMILAR EXPOSED OR SUSPENDED ITEMS OR EQUIPMENT.
12. PROTECT ALL EXISTING CONSTRUCTION UTILITIES, AND FACILITIES TO REMAIN. ANY AND ALL DAMAGE DURING CONSTRUCTION AND DEMOLITION SHALL BE REPAIRED TO MATCH THE EXISTING AT NO ADDITIONAL COST TO THE OWNER, THE CONTRACTOR RESPONSIBLE FOR THE DAMAGE WILL BE RESPONSIBLE FOR THE COST OF REPAIR. IN THE EVENT THAT NO CONTRACTOR CAN BE IDENTIFIED, THE COST OF REPAIR WILL BE DIVIDED EQUALLY BETWEEN ALL CONTRACTORS.
13. THE STRUCTURE IS DESIGNED TO BE SELF-SUPPORTING AND STABLE AFTER THE BUILDING IS FULLY COMPLETED. IT IS SOLELY THE CONTRACTOR'S RESPONSIBILITY TO DETERMINE ERECTION PROCEDURES AND SEQUENCE, AND TO ENSURE THE STABILITY OF THE BUILDING AND ITS COMPONENT PARTS, AND THE ADEQUACY OF TEMPORARY OR INCOMPLETE CONNECTIONS DURING ERECTION. THIS INCLUDES THE ADDITION OF ANY SHORING, SHEETING, TEMPORARY GUYS, BRACING OR THE DOWNS THAT MIGHT BE NECESSARY. SUCH MATERIAL IS NOT SHOWN ON THE DRAWINGS. IF APPLIED, THEY SHALL BE REMOVED AS CONDITIONS PERMIT, AND SHALL REMAIN THE CONTRACTOR'S PROPERTY. THE ARCHITECT / ENGINEER HAS NO EXPERTISE IN AND TAKES NO RESPONSIBILITY FOR, CONSTRUCTION MEANS AND METHODS OR JOB SITE SAFETY DURING CONSTRUCTION. PROCESSING AND / OR APPROVING SUBMITTALS MADE BY THE CONTRACTOR WHICH MAY CONTAIN INFORMATION RELATED TO CONSTRUCTION METHODS OR SAFETY ISSUES, OR PARTICIPATION IN MEETINGS WHERE SUCH ISSUES MIGHT BE DISCUSSED, SHALL NOT BE CONSTRUED AS VOLUNTARY ASSUMPTION BY THE ENGINEER OF ANY RESPONSIBILITY FOR SAFETY PROCEDURES.
14. IT IS SOLELY THE RESPONSIBILITY OF EACH CONTRACTOR TO FOLLOW ALL APPLICABLE SAFETY CODES AND REGULATIONS DURING ALL PHASES OF CONSTRUCTION. THE ARCHITECT / ENGINEER IS NOT ENGAGED IN, AND DOES NOT SUPERVISE CONSTRUCTION.
15. EQUIPMENT LOADS, OPENINGS AND STRUCTURE IN ANY WAY RELATED TO HVAC, PLUMBING, OR ELECTRICAL REQUIREMENTS ARE SHOWN FOR BIDDING PURPOSES ONLY. CONTRACTOR SHALL COORDINATE THIS INFORMATION WITH THE INVOLVED TRADES BEFORE PROCEEDING WITH SUCH PORTION OF THE WORK. EXCESS COST RELATED TO VARIATION IN THESE REQUIREMENTS TO BE BORNE BY THE APPROPRIATE CONTRACTOR REQUIRING THE REVISION.
16. GOVERNING CODE: OHIO BUILDING CODE 2007.
17. EXISTING BUILDING: PROVIDE TEMPORARY SUPPORTS AND OTHER MEASURES AS REQUIRED TO PREVENT DAMAGE TO THE EXISTING BUILDING DURING CONSTRUCTION. FIELD VERIFY ALL EXISTING DIMENSIONS AND ELEVATIONS WHICH AFFECT THE NEW CONSTRUCTION.
18. APPROXIMATE LIMITS OF CONSTRUCTION ARE NOTED ON THE PLANS. HOWEVER EXACT EXTENTS OF THE WORK MAY DIFFER FROM THESE APPROXIMATE DEMARCATONS. WORK OUTSIDE OF THESE LIMITS OF CONSTRUCTION MAY BE REQUIRED. REFER TO THE CONTRACT DOCUMENTS IN THEIR ENTIRETY FOR SLOPE OF WORK.

DRAWING INDEX:

Table listing drawing sheets: COVER SHEET, INDEX SHEET, ARCHITECTURAL, A-CODE, A-101, A-102, A-300, A-400, A-501, A-600, PLUMBING, MECHANICAL, ELECTRICAL.

SPECIFICATION NOTES:

- DIVISION 05 - METALS
05 12 00-1 STRUCTURAL STEEL FRAMING (SEE DRAWINGS)
DIVISION 06 - WOOD, PLASTICS, AND COMPOSITES
06 10 00-1 ROUGH CARPENTRY
06 40 00-1 ARCHITECTURAL WOODWORK
06 40 00-1 PLASTIC LAMINATE
06 40 00-2 WOOD TRIM (SIZE AS REQ'D)
06 40 00-3 TRANSLUCENT PANEL
DIVISION 07 - THERMAL AND MOISTURE CONTROL
07 21 00-1 THERMAL INSULATION
07 92 00-1 JOINT SEALANT
DIVISION 08 - OPENINGS
08 11 00-1 METAL DOOR FRAME
08 14 00-1 WOOD DOOR (REFER TO DOOR SCHEDULE)
08 21 00-1 DOOR HARDWARE
DIVISION 09 - FINISHES
09 21 16-1 GYPSUM BOARD
09 21 16-2 METAL STUD (SIZE AS INDICATED)
09 30 00-1 CERAMIC TILE
09 50 00-1 24"x24" ACOUSTICAL CEILING PANEL
09 50 00-2 ACT CEILING GRID
09 50 00-3 24"x24" METAL PANEL
09 50 00-4 ACT CEILING TRIM
09 50 00-5 METAL CEILING TRIM
09 60 00-1 RESILIENT BASE
09 68 00-1 CARPETING
09 90 00-1 PAINTING
09 90 00-2 SPECIAL COATING
DIVISION 10 - SPECIALTIES
10 28 13-1 GRAB BAR
10 28 13-2 SURFACE MOUNTED STAINLESS STEEL SHELF
10 28 13-3 GARMENT HOOK
10 28 13-4 SURFACE MOUNTED PAPER TOWEL DISPENSER
10 28 13-5 SURFACE MOUNTED TISSUE DISPENSER
10 28 13-6 WASTE RECEPTACLE ON FLOOR (BY OJ)
10 28 13-7 SURFACE MOUNTED SOAP DISPENSER
10 28 13-8 METAL FRAMED MIRROR
10 44 00 FIRE PROTECTION SPECIALTIES
DIVISION 22 - PLUMBING
22 40 00-1 PLUMBING FIXTURE (REFER TO PLUMBING DRAWINGS)
DIVISION 23 - HVAC
23 30 00-1 DUCTWORK (REFER TO HVAC DRAWINGS)
23 37 00-1 HVAC DIFFUSER, GRILLE, OR REGISTER (REFER TO HVAC DRAWINGS)
DIVISION 26 - ELECTRICAL
26 51 13-1 LIGHT FIXTURE (REFER TO ELECTRICAL DRAWINGS)

SYMBOLS LEGEND:

Table mapping symbols to drawing types: WORK POINT, CODED NOTE, DOOR & FRAME INDICATOR, COLUMN LINE, INTERIOR WALL TYPE INDICATOR, REVISION, SECTION OR ELEVATION REFERENCED TO DRAWINGS, DETAIL REFERENCED TO DRAWINGS, INTERIOR ELEVATION REFERENCED TO DRAWINGS, FLOOR ELEVATION.

LOCATION MAP:

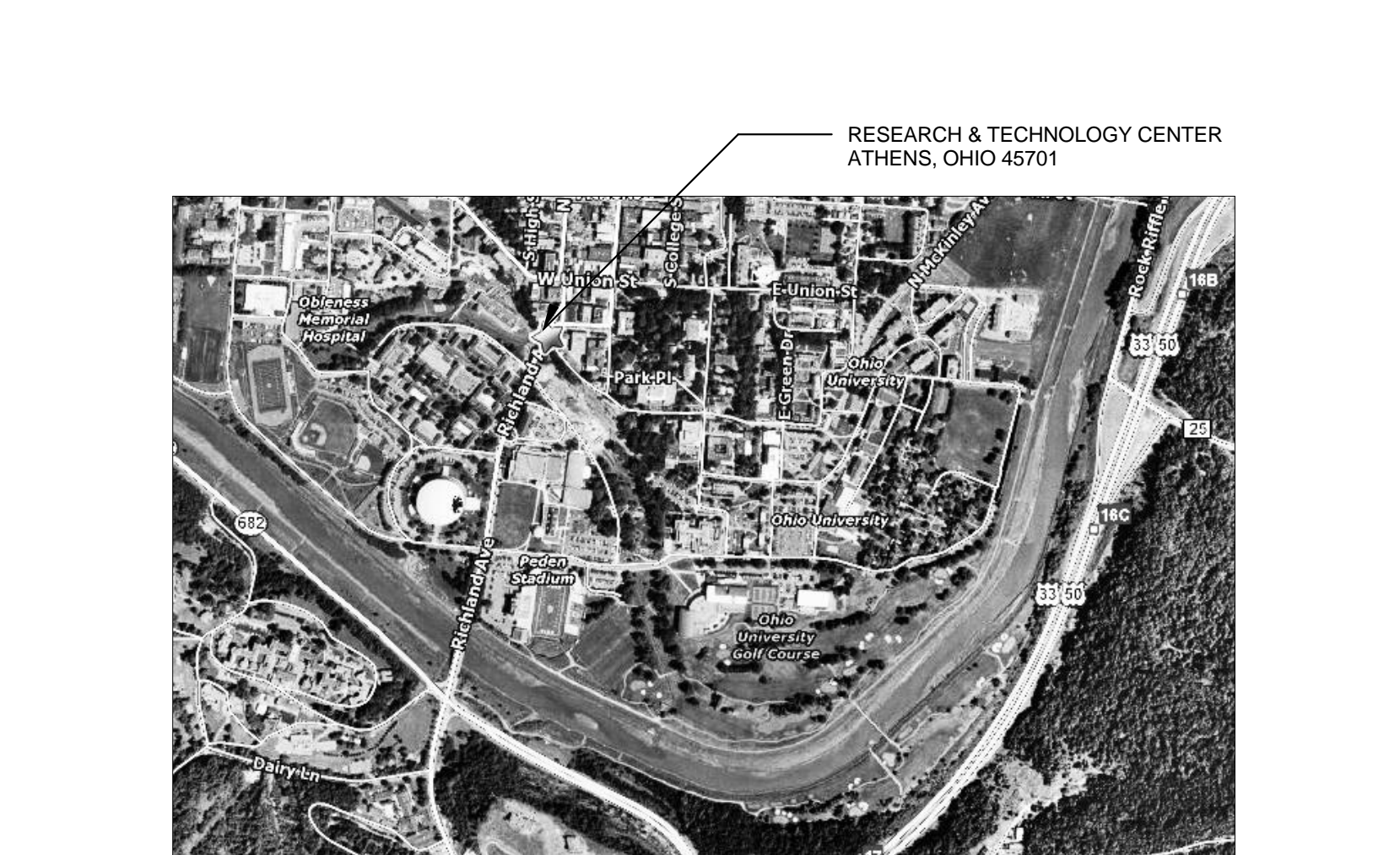


Table containing project information: PROJECT TITLE (GRADUATE COLLEGE RESEARCH & TECHNOLOGY BUILDING RENOVATION), PREPARED FOR (OHIO UNIVERSITY), PREPARED BY (JEROME M. SCOTT ARCHITECTS, INC.), SHEET TITLE (INDEX SHEET), SCALE (AS NOTED), DATE (MAY 18, 2009), SHEET NO. (A-INDEX).